



Egidia SC cantilever sliding gates

USERS & INSTALLATION MANUAL

Table of Contents

1	General warnings.....	3
1.1	Warnings for installer and end user	3
1.2	Particular points to note.....	4
2	Content of delivery.....	4
3	Required accessories for installation.....	5
4	Foundations.....	6
4.1	Foundation drawing.....	6
4.2	Ground anchors	7
4.3	Preparing of the installation levels	8
5	Installation of the guiding post.....	8
6	Installation of the rear roller set.....	9
7	Installation of ending post.....	9
8	Installation of the wing	10
9	Installation of rear support roll	10
10	Geometry regulation.....	11
11	Automation and safety accessories	11
12	CE labeling	12
13	Guarantee.....	13
13.1	Definition of the guarantee	133
13.2	General exclusions.....	133
13.3	Two years guarantee on automation and components of gates.....	13
14	Maintenance.....	14
	Attachments	

1 General warnings

These warnings constitute an integral and essential part of the product and must be issued to the user. Read the warnings in this paragraph carefully since they supply important information concerning the safety of installation, use and maintenance. Keep this handbook for any further consultation.

1.1 Warnings for installer and end user

- 1) After removing the packaging, make sure that the equipment is in good condition. If in doubt, please do not use the equipment but appoint professionally qualified personnel.
Children should not be allowed in the reach of packaging elements (plastic bags, expanded polystyrene, nails, etc.), as they are potential sources of danger.
- 2) Before plugging in the equipment, make sure that the data on the identification plate corresponds to those of the electricity distribution network. The installation must be carried out by qualified personnel, which have received a technical training on the product, in accordance with current regulations, according to the manufacturer's instructions. The installation regulations can vary from country to country. Incorrect installation can cause harm to people, animals or objects, for which the manufacturer cannot be held responsible.
The electrical safety of this equipment is only achieved if it's correctly connected to an effective earthed system, carried out as foreseen by the current safety regulations. It is necessary to verify this fundamental safety requirement and, in case of doubt, ask for an accurate checking of the system by a professional qualified person. The manufacturer cannot be held responsible for eventual damage by not earthing the gate. Check that the electrical capacity of the system is adequate for the maximum power needed for the gate as indicated on the identification plate. If in doubt, please ask a professionally qualified person. The latter should, in particular, also ascertain that the cross-sections of the power supply cables are suitable for the power absorbed by the whole equipment of the gate. It is not advisable to use adaptors, multiple plugs and/or extension wires. Should their use prove indispensable, it is necessary to only use plugs, simple and multiple adaptors and extension cables which are conform to the current safety regulations. Be careful not to exceed the capacity limit value of the current marked on the single/multiple adaptors and extension cables.
- 3) This gate is only destined for the use of which it has been designed (the complete system). Any other use should be considered improper and therefore dangerous. Betafence cannot be held responsible for damage caused by improper, incorrect and unreasonable use.
- 4) For the use of any electrical equipment some fundamental rules need to be taken into account. (All types of equipment). In particular:
 - Do not touch the equipment with damp or humid hands or feet.
 - Do not use the equipment when you are bare foot.
 - Do not pull the power supply cables in order to disconnect the equipment from the power supply network.
 - Do not leave the equipment exposed to atmospherical agents (rain, sun, etc.) unless expressly foreseen.
 - Do not allow the equipment to be used by small children or incapable persons.
- 5) Before carrying out any cleaning or maintenance operations, unplug the equipment from the electrical supply network either by removing the plug or turning off the main switch.
- 6) In case of a failure and/or poor functioning of the equipment, switch it off without making any attempt to repair it or direct intervention. Consult professionally qualified personnel. Only the manufacturer or a certified installer, exclusively using original spare parts, should carry out the eventual repairs to the product. Not doing so could compromise the safety of the equipment.
- 7) An omni-power switch should be provided for the installation as foreseen by current safety regulations, with an opening distance of 3 mm or more on the part of the contacts.
- 8) The user should not place or replace any cable of the installation; only professionally qualified personnel can do this.

1.2 Particular points to note

- Avoid operating near to hinges or mechanical moving parts which could create dangerous situations. Parts of the body and clothing can easily be caught up in them and because of the difficulty of freeing oneself from their grasp.
- Remember that this equipment can supply very considerable forces, which could be a source of danger. Do not get within the action range of the gate while it is moving, wait until it has reached complete stop. A moving gate can be dangerous for those who enter its action range.
- Only set the gate in motion when it is completely visible and free of impediments and obstacles.
- Do not allow small children to play with the opening controls or with the remote controls.
- Do not allow small children to play within the opening and/or the action range of the gate.
- Do not go against the movement of the gate, as it can cause dangerous situations.
- Clearly indicate on the gate that it is automated and can be put in motion from a distance (if supplied with such a device).
- Inform all the users of the gate of these warnings and the security equipment as mentioned in the user's manual. Display this information at a suitable place.
- To guarantee the efficiency of the installation and its correct functioning, you should follow the manufacturer's indications and have the periodical maintenance and regular checks of the installation carried out by professionally qualified personnel. In particular, it is recommended to have the correct functioning of all safety devices checked periodically according the BETAFENCE MAINTENANCE BOOKLET.
- Learn to use the manual emergency control system according to the procedures foreseen in the instruction booklet.
- When you close the door, take care that the lock is on open position, to avoid knock against the counter lock.
- Make sure that a person is holding the wing opening or closing the gate so that unguided moving of the wing can be excluded. Avoiding unnecessary knock.

2 Content of delivery

With the delivery you should receive:

1. Wing of the gate equipped with
 - Manual execution: Locinox lock
 - Full automatic execution: dental rack + active safety strips
 - Motorizable execution: dental rack (Pre-installed, module 4)



2. Single guiding post with roller set and motor (option)



3. Double lock post



4. Rear roller set



5. Back support roll (only for gates ≥ 6 m)



3 Required accessories for installation

1. Measure



2. Spirit level or laser level



3. Rotary hammer



4. Conduct pipe Ø50 or bigger



5. Chemical anchors M16x250 or longer.- 18 pieces



6. Flat washers DIN 9021 for M16 –28 pcs.



7. Flat washers DIN 125 for M16- 8 pcs



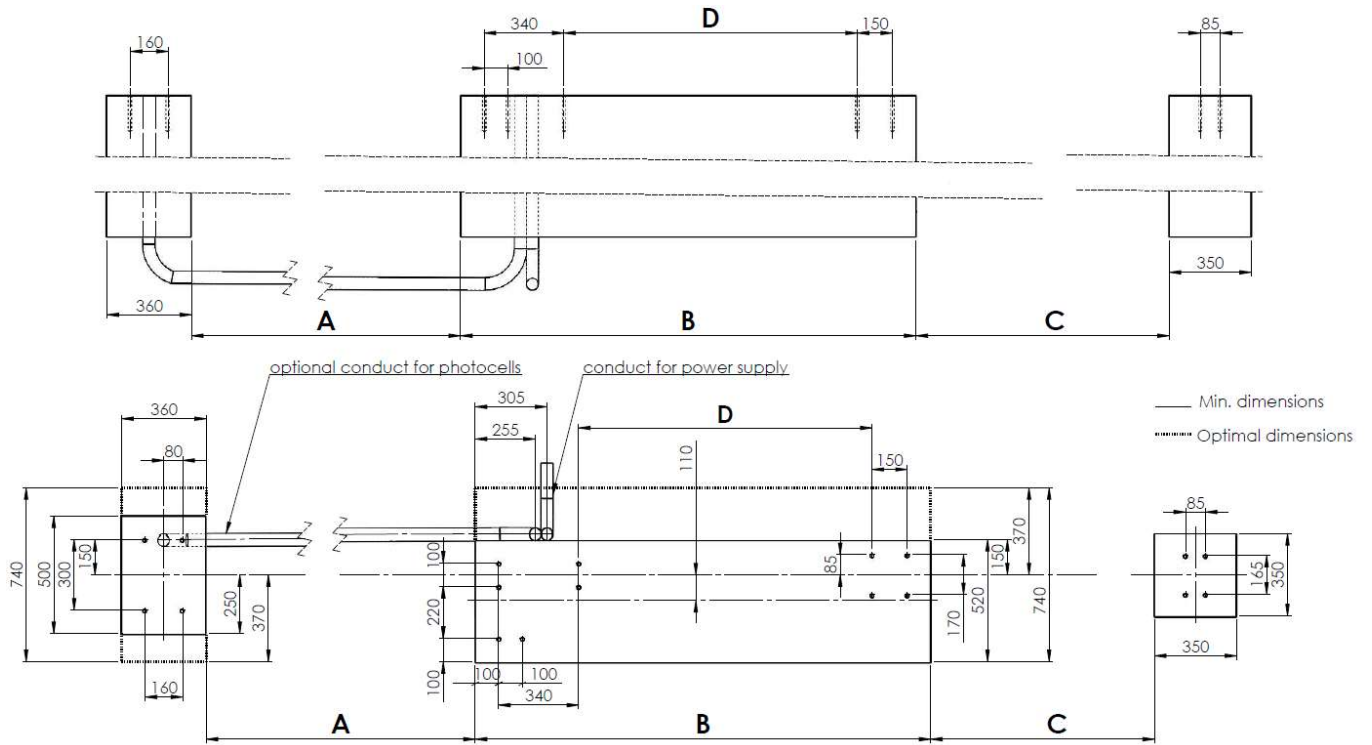
8. Hex nuts M16 DIN 934 – 18 pcs.



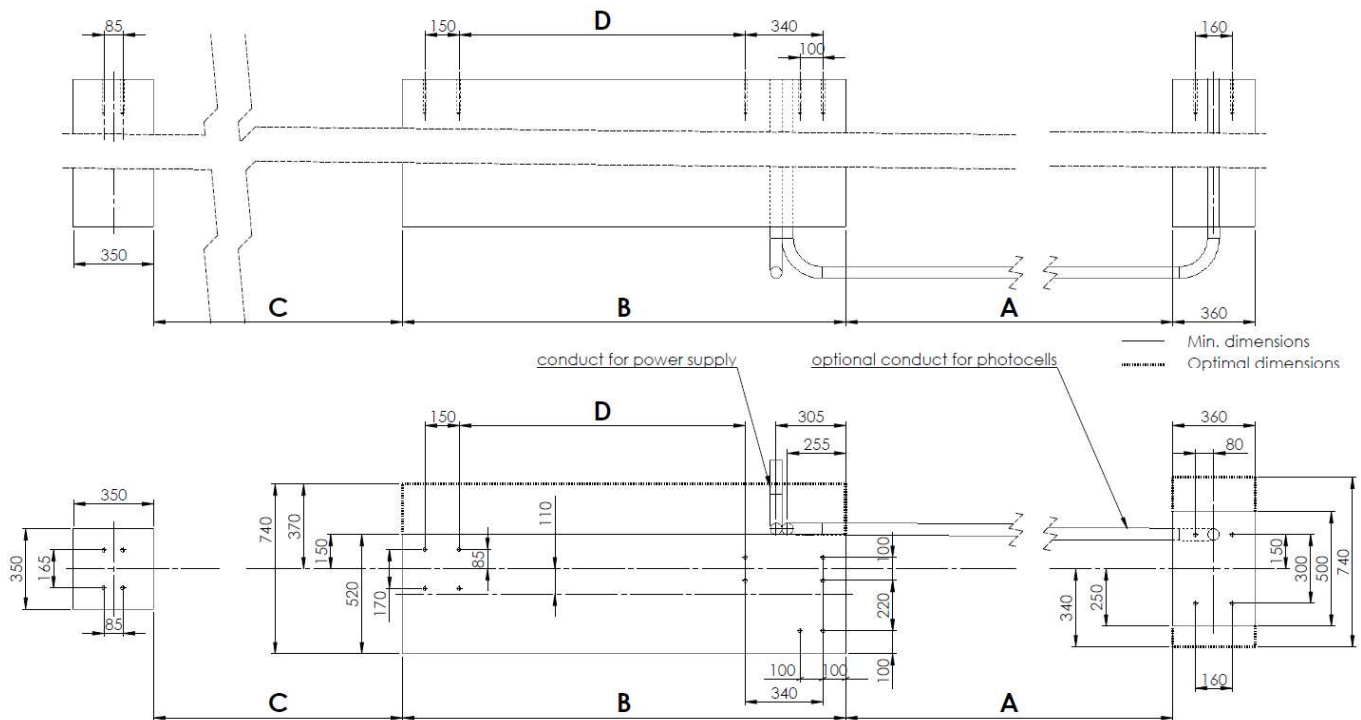
4 Foundations

4.1 Foundation drawing:

1. Foundation drawing for right gate



2. Foundation drawing for left gate



Opening	4m	5m	6m	7m	8m	9m
A	3750	4750	5750	6750	7750	8750
B	1340	1640	1940	2340	2640	2940
C*	-	-	3200	3800	4350	4900
D	650	950	1250	1650	1950	2250

* Rear support roll is required only for the gates with opening $\geq 6\text{m}$

- Prepare the foundations according to the drawing.
- The depth of the foundations should be selected according to the local freezing depth, but it should be at least 800 mm.
- Be aware about the displacement of the main foundation axis (110mm) as presented in the foundation drawing.
- Foundations should be made of concrete class B25 or better.
- If you want to connect photocells by cable, put conduct pipes for electric wires between the ending post foundation and the main post. Conduct pipes should stick above the future foundation's surface.
- When the concrete is fully settled, fix chemical anchors M16x250 (or longer) in the foundations. Anchors must be at least 10 cm above the concrete.
- Even If the foundations are well leveled you have to put the base plates over nuts and washers DIN9021 on each chemical anchor (see next point)

4.2 Ground anchors

1. Install the ground fixations of the guiding and end post according to the positions indicated on the foundation plan. Therefore following fixation material is required: Chemical anchors M16x250 (minimum 100mm above Finished Ground Level. For anchor depth check installation manual of supplier chemical resin).

Betafence does not deliver the chemical anchors.

2. Mark the position of the holes with a small diameter concrete drill, this will help to center the final drill.

3. Drill the corresponding holes for the fixation according to the installation instructions of the supplier of the chemical anchors. Drillings must be in good vertical position.

4. Remove any dust and small particles from the drill holes using a brush and hand pump. This will ensure perfect adhesion between the resin for the ground anchor and the concrete foundation.

5. Place the chemical anchors according to the instructions of the supplier. Drying times must be respected. Use "high bond" type anchors for correct installation.



4.3. Preparing of the installation levels

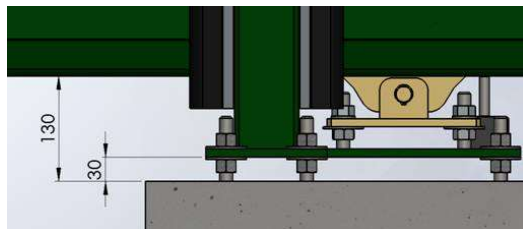


1. Screw the bottom adjustment nuts on their ground anchors and place the washers on the nuts.
2. Choose one anchor at the guiding post and turn its nut until the washer is leveled 30mm above concrete level. Use this anchor as reference and put all other nuts / washers of the guiding and lock post at the same level, so that they are perfectly horizontal one between another.

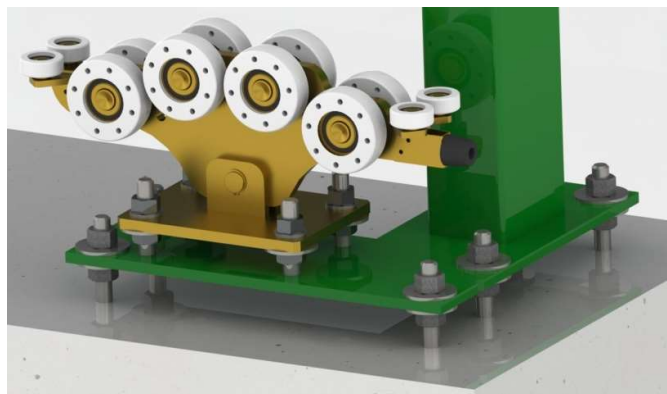
Remark:
It's very important to fill the free space under the plate of the guiding- and lock post with shrinkage-compensated concrete.

5 Installation of the guiding post

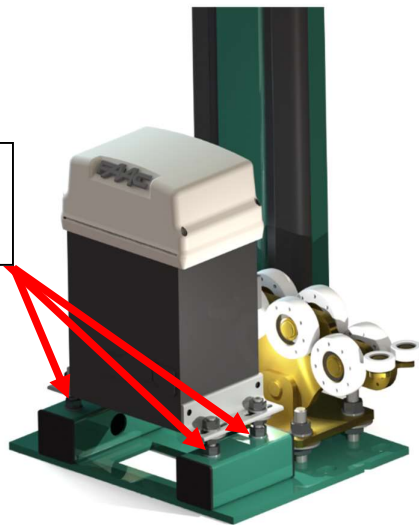
- After the preparation of the installation level (point before).
- Put the guiding post with the base plate on the fixed anchors in the main foundation and then screw it with the washers and nuts.



Remember to always have a proper leveling of the base plate.



Do not tighten nuts to profiles, it causes post tilt!



6 Installation of the rear roller set

- Put the rear carriage on anchors fixed in main foundation and then screw it with washers and nuts. Bumpers of the carriages should be directed to the outside of the foundation.

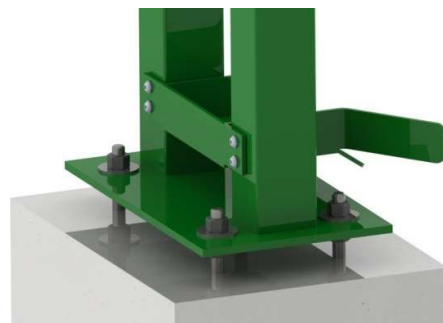
Carriages must be screwed perfectly in line and at the same level.



7 Installation of ending post

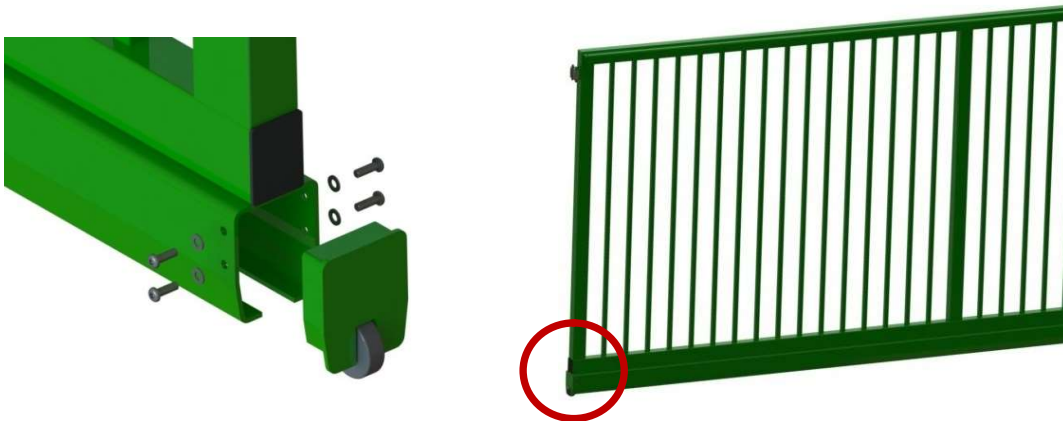
- After the preparation of the installation level.
- Put ending post on anchors fixed in foundation and then screw it with washers (DIN 9021) and nuts.

Ending post should be placed on the same level as guiding post.



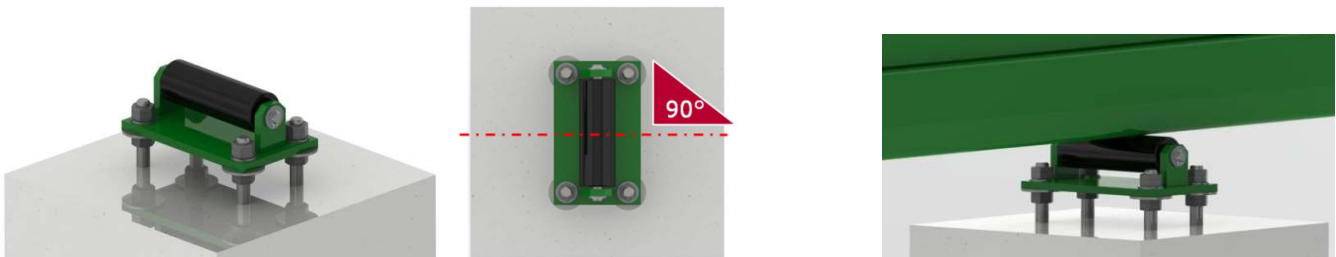
8 Installation of the wing

Before installation of the wing on the carriages you must disjoin the front cap from the roller.



9 Installation of rear support roll

- Put the support roll on anchors fixed in rear foundation and then screw it with washers and nuts.
- Supporting roller should be fixed to the bottom of the rail and has to be perpendicular to the axis of wing.



Adjustments of the guiding wheels of the wing

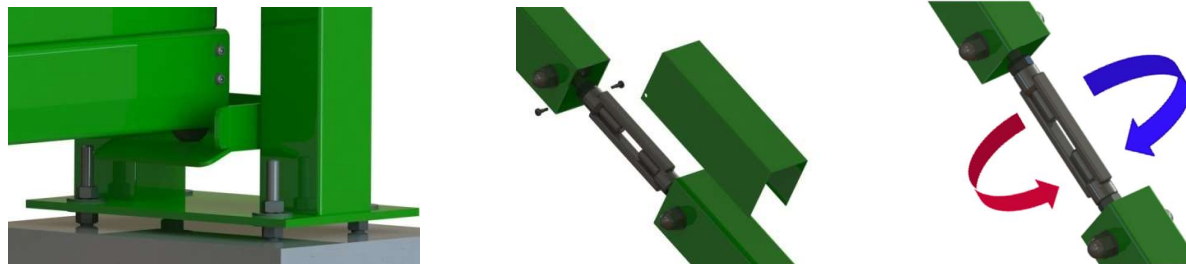
- Slide wing on the carriages. Check if the carriages go slightly inside the rail and adjust the stabilization of the rollers inside the L-profile on the guiding post. One of the rollers should be aligned to the L-Profile and the second to the frame of wing.

After the adjustments, reassemble the front cap of the wing.



10 Geometry regulation

- If the front cap roller doesn't lie on the positioning plate of ending post, **regulate height of the end post.**
Don't adjust tension system.
- Just as last resource adjust tension system using the roman screw.



If the gate work properly then the installation is completed.

Please don't forget the systematic services of the gate.

11 Automation and safety accessories

After testing if the gate works properly don't forget to unscrew vent bolt under the cap.



The gates can be equipped with one of these types of automation.

- FAAC 746 – for normal and intensive use
- FAAC 844 – for heavy conditions

Motor and safety accessories are fully assembled and the cabling is done.

The provided photocells are wireless photocells XP20W, with batteries power supply. Those photocells can be also connected to the motor according the manual of motor supplier.

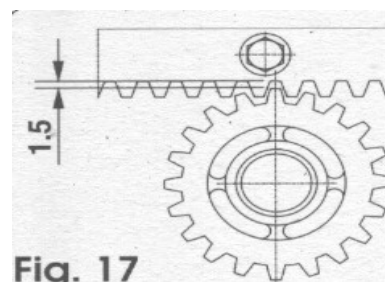
If gate was ordered with Keyswitch or / and Keypad, only wireless (battery powered solution) will be ready to work.

More info regarding the electric connection can be found on:

<http://www.betafence.net/slidinggatesmanuals>

After the mechanical installation of the gate, please regulate the motor height.

There should be ~1,5mm of distance between the motor gear wheel and the dental rack.



12 CE labeling

A CE label from Betafence guarantees the gate has been produced following the CE Regulations as specified in the EU Construction Products Regulation (N° 305/2011).

A specific Declaration of Performance (DoP) is available for this gate with number DoP-Beta-0xx (written on the CE label).

The contents of this Declaration of Performance can be consulted on

www.betafence.com/en/ce-documentation.



13 Guarantee

13.1 Definition of the guarantee

Betafence NV (hereafter named "Betafence") hereby guarantees the lifetime of the products for a period of two (2) years starting from the date of invoice issued by the seller.

The guarantee is applicable under following conditions:

- Any alleged defect detected within the guarantee period must be expressly claimed in writing within 30 days of its detection. In case of complaint, the invoice will be requested by the seller.
- This guarantee covers all production defects of this Betafence product as well as its state of preservation, for temperatures between minus 20°C and plus 50°C provided that the product is not erected at temperatures below 0°C (PVC coated products) or below -10°C (other products).

Upon validation of the claim by Betafence and if simple repair is not possible, then Betafence engages to replace the defective Betafence products free of charge, materials only, excluding coverage of possible direct and indirect costs.

If necessary, an independent inspection authority of repute may be engaged to establish the true nature of your claim. Any expenses relating to such inspection will be for the account of Betafence, if the investigation proves the defect of the Betafence product is caused by Betafence.

13.2 General exclusions

- Products, which are not supplied by Betafence, including any possible detrimental impact of these on Betafence products.
- Damage caused by installation not in compliance with the instructions of Betafence.
- Damage caused during storage, transformation, handling, installing, or after erecting the product, or when the product is used for purposes for which it is not intended.
- Corrosion due to abnormal levels of aggressive chemicals or to unexpected factors which were not mentioned by the applicant at the time of the guarantee request.
- A limited number of rust spots with a surface of maximum 2% of the total surface of the individual products. Decoloration of coating. White rust.
- The non-plastic coated products and surfaces.
- This guarantee does not cover failure or damage due to improper use or application, soil or structural movement, natural disasters, fire, abuse or misuse, vandalism, war, negligence, failure to perform proper routine maintenance.
- This guarantee is only valid once full payment has been received.

13.3 Two years guarantee on automation and components of gates

The guarantee on operation and automation components of gates is limited to 2 years from the invoicing date.

Exclusions

- Gates not properly installed in line with Betafence instructions.
- Failure to check proper functioning of the gate at least 2 times per year, if needed including adjusted or cleaning.
- Gates where regular service by a qualified person has not been done as prescribed in the maintenance instructions, a written logging of the maintenance history must be in place.
- Improper use of the gate.
- Unless approved by Betafence, any modification on the gate structure or on automation, and the use of non-compatible automation parts makes the guarantee void.

14 Maintenance

Inspection should be carried out by the owner, installer or seller of the product before and after each winter season and immediately after any problems with the gate.

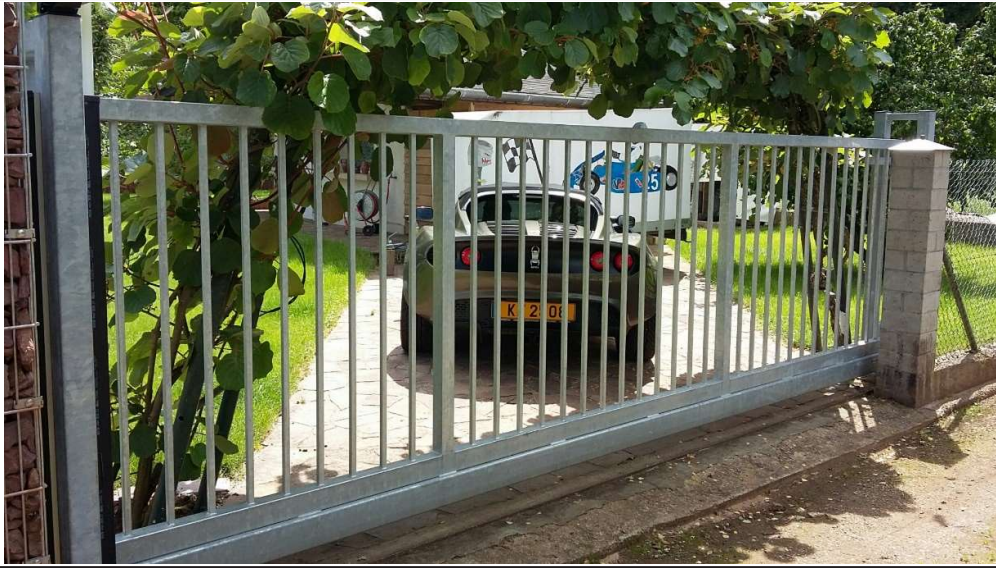
Each maintenance should be recorded in the table and should be enclosed to all the eventual claims.

- A) General visual inspection of the gate condition - check that no part of the gate has been damaged, hit by a vehicle or that there was a general bad use of the gate
- B) Check the vertical position of the gate.
- C) Check all the bolts, if needed tight the screw connections or exchange broken bolts.
- D) Check the possible wear of the guiding wheels and clean easy accessible elements.
- E) Check the opening area of the gate; remove all possible obstacles (plants, snow, mud, etc.)
- F) Clean the cover of the photocells and motor
- G) Replace the batteries (CR2 3V) of the photocell installed on the lock post.

Additional Remarks:

- Inspection should be carried out by the owner, installer or seller of the product before and after each winter season and immediately after any problems with the gate occur.
- Do not grease any rollers or the underbeam.
- Damage of the coating shall only be repaired with a PU-paint and will be done by a professional
- Betafence doesn't take responsibility of incorrect functioning of the gate after unauthorized changes in the settings of the motor or any of the safety accessories.

Gate number (placed on plate under the tail of the gate)									
Inspection No.	Inspection date	A	B	C	D	E	F	G	Signature
1									
2									
3									
4									
5									
Comments:									



Betafence España, S.L.U
Vitoria, 23 - 2º D – APDO 5047
E-09004 BURGOS
tel.: + 34 947 269 711
fax: + 34 947 252 329
info.spain@betafence.com

Betafence France S.A.
Rue Alexis De Tocqueville
Parc de haute technologie
F-92183 ANTONY CEDEX
tel.: 01 40 96 26 08
fax: 01 40 96 26 65
Info.france@betafence.com

Betafence NV sales export
3Square Village | Rijvisschestraat 126
B-9052 GENT
tel.: + 32 9 248 17 00
fax: + 32 9 248 17 58
Info.export@betafence.com

Betafence NV sales Benelux
Deerlijkstraat 58a
B-8550 ZWEVEGEM
t: +32 (0)56 73 46 46
f: +32 (0)56 73 45 45
tel. nl. 0800-022 03 59
fax. nl. 0800-022 77 45
info.benelux@betafence.com

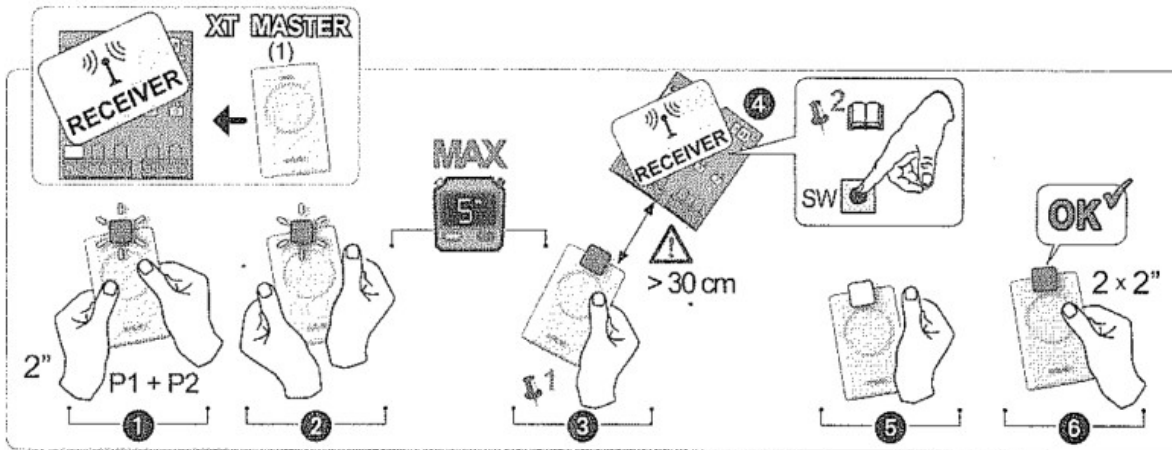
Betafence Italia s.p.a.
c.da salinello, 59
64018 I-TORTORETO
tel : 0861 7801
fax : 0861 781650
info.italy@betafence.com

Betafence Deutschland GmbH
Dülkener Straße 200
D-41366 SCHWALMTAL
tel . +49 2163 339 0
fax. +49 2163 339 225
info.germany@betafence.com

Betafence ltd
shepcote lane
UK-SHEFFIELD s9 1ty
tel. +44 (0)870 127 0027
fax. +44 (0)870 127 0028
info.uk@betafence.com

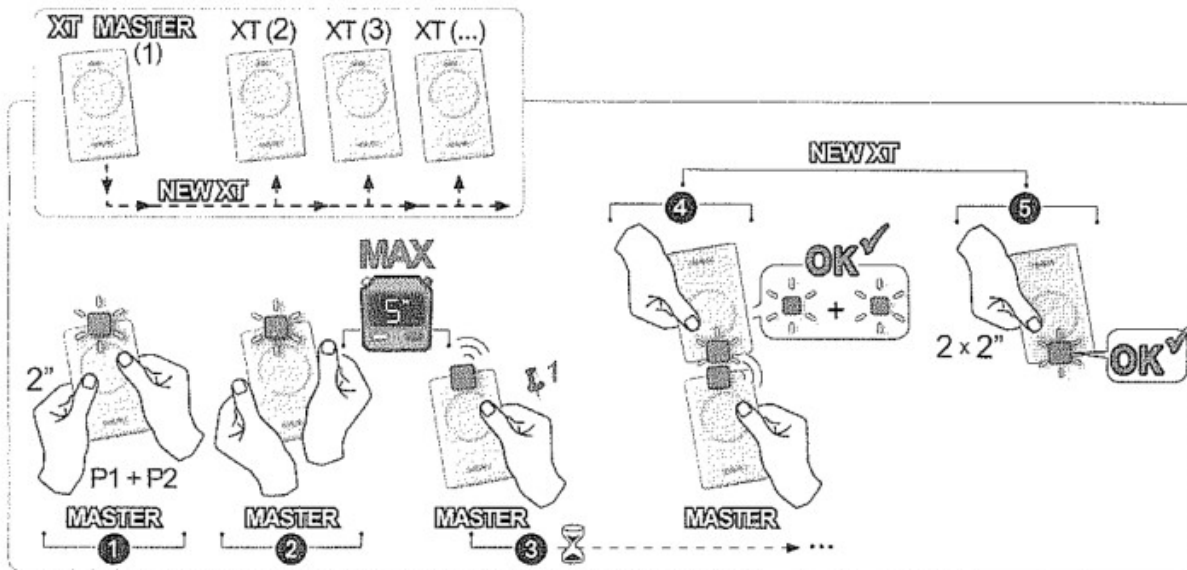
Betafence Sweden
Gräsvägen 8b
S-448 36 FLODA
tel. +46 (0)302 356 25
fax. +46 (0)302 367 25
info.nordic@betafence.com

Radio receiver FAAC – „master” remote controller programming



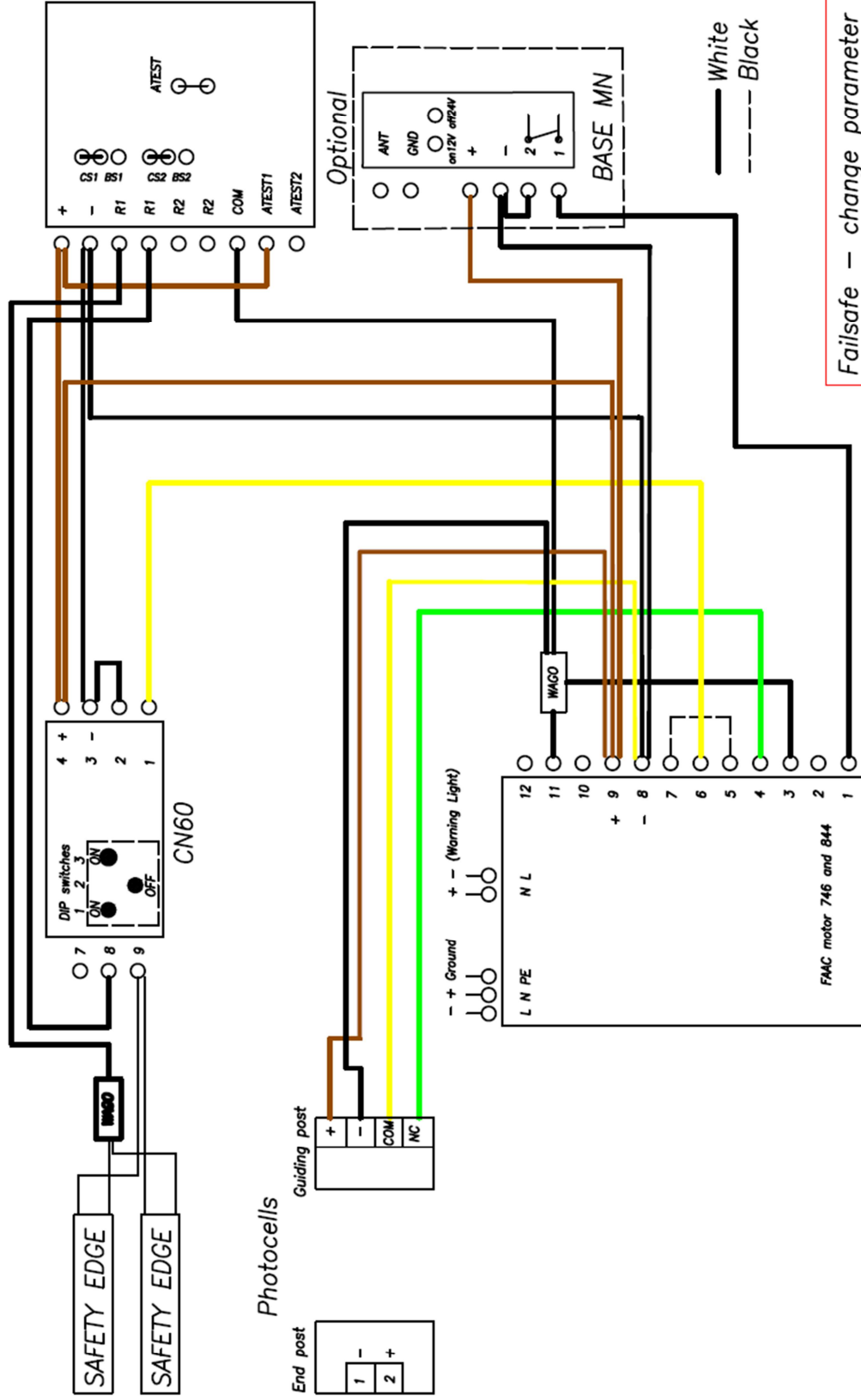
- 1) Push and hold both remote controller buttons for 2 seconds. Led on the remote control will blink.
- 2) Within max. 5 seconds, holding remote controller in distance not lower than 30 cm push and hold the button you will programming.
- 3) Push „SW” button on radio module.
- 4) Release the button on remote controller.
- 5) Push twice for 2 seconds the programmed button.

Radio receiver FAAC – remote controller programming from remote controller



- 1) Push and hold both remote controller buttons for 2 seconds. Led on the remote control will blink.
- 2) Within max. 5 seconds, holding remote controller in distance not lower than 30 cm push and hold the button you will programming.
- 3) Push twice for 2 seconds the programmed button.

Electric plan for automatic gate EGIDIA SC 17.01.2017



Failsafe - change parameter FS=y